

Historic Homes

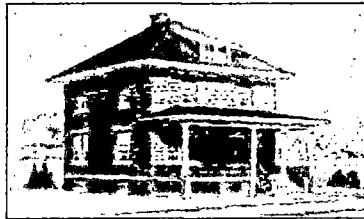
- What is a Sears home?
- Chronology of homes
- History of homes
- Home listings by date

Images of Homes

- 1908-1914 -1927-1932
- 1915-1920 -1933-1940
- 1921-1926

- Contact Sears Holdings Archives
- Contact a fellow enthusiast
- Register as an enthusiast
- Homes Q&A
- Does Sears Holdings give permission to reproduce catalog pages or images from its catalogs, and or other memorabilia?
- Books and references

Sears Homes 1908-1914



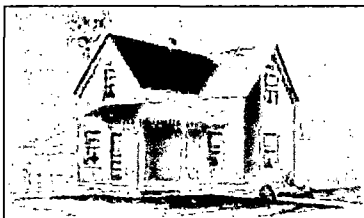
Model No. 52; (\$782 to \$1,995)



The Hamilton (Model Nos. 102, 150); (\$1,023 to \$2,385)



The Chelsea (Model No. 111); (\$943 to \$2,740)



Model No. 115; (\$452 to \$1,096)



Model No. 113; (\$1,062 to \$1,270)



Model No. 137; (\$1,140 to \$1,342)



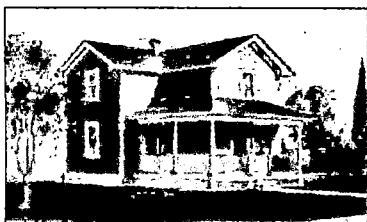
Model No. 158; (\$1,548 to \$1,845)



The Niota (Model No. 161); (\$788 to \$1,585)



Model No. 157; (\$1,521 to \$1,866)



Model No. 159; (\$548 to \$762)



The Maytown (Model No. 167); (\$645 to \$2,038)



Model No. 191; (\$892 to \$966)



The Arlington (Model No. 145); (\$1,294 to \$2,906)



Model No. 147; (No price given)



Model No. 154; (\$2,287 to \$2,702)



Model No. 164; (\$1,259 to \$1,623)



Model No. 165; (\$1,248)



Model No. 187; (\$1,273)